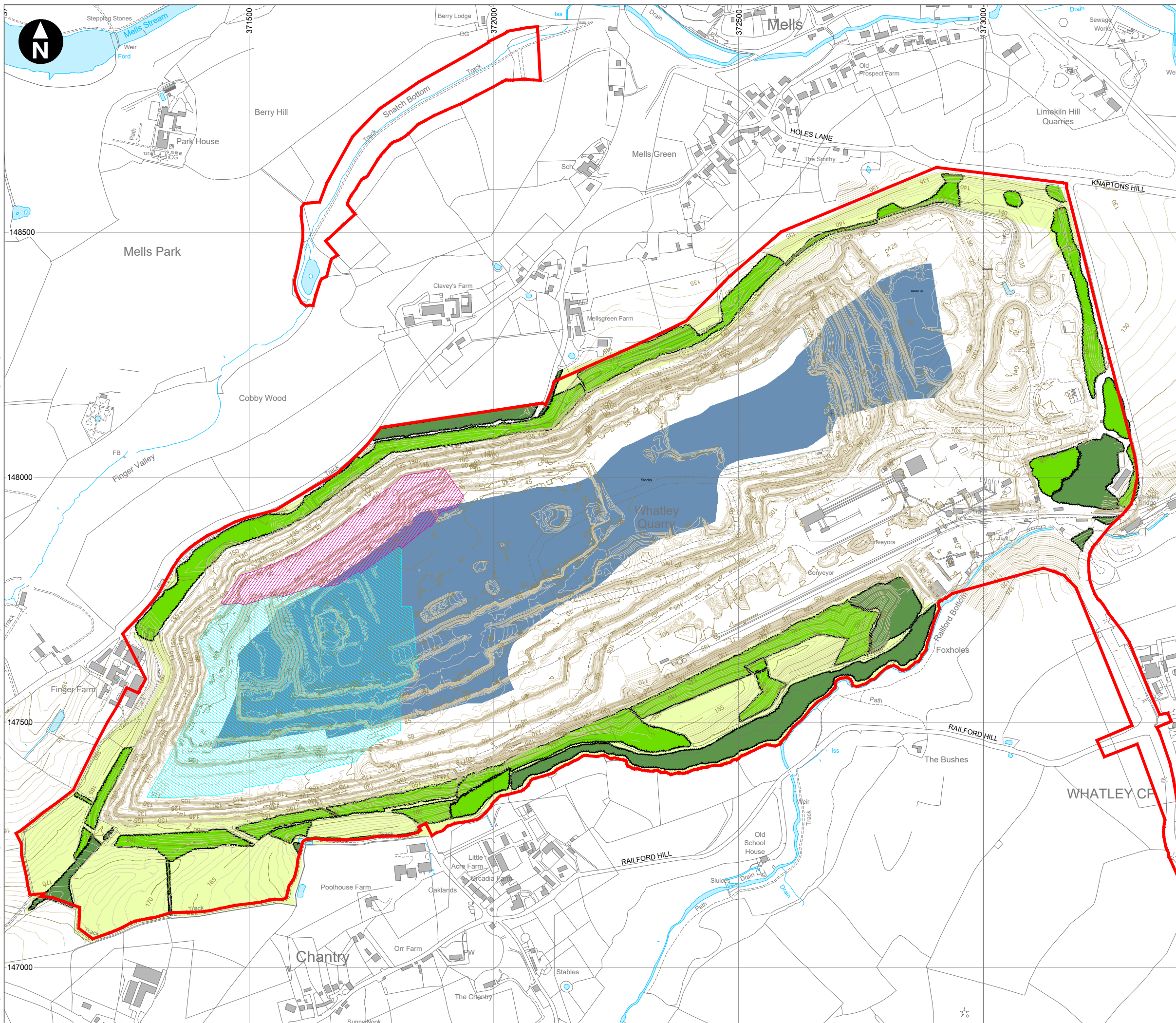




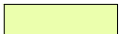





H:\Projects\40380 Whatley Quarry Planning Support\Deliver Stage\Design_Technical\Drawings\CAD\40380-WOOD-XX-XX-FG-MD-0031_S0_P01_1.dwg Originator: JACQUI PARKIN



- Key
-  Whatley Quarry planning application & ROMP submission boundary
 -  Contour (1m interval)
* OS Terrain 5 contours at 2m intervals are shown in the absence of detailed 1m contour topographical data
 -  Existing vegetation to be retained
 -  Existing vegetation to be restored
 -  Existing grassland to be retained
- Indicative areas of mineral extraction**
-  Western staggered benches
 -  Northwest Tip
 -  Deepening of quarry floor (from permitted 0m AOD to -60m AOD)



© Crown copyright and database rights 2021 Ordnance Survey 0100031673

Whatley Quarry
Revised Scoping Report

Indicative areas of mineral extraction

May 2022

