

**Chipping Sodbury Quarry
Community Liaison Group Meeting
11th July 2024
Meeting Room at Chipping Sodbury quarry**

DRAFT MINUTES

ATTENDEES:

John Ford (JF)	Yate Town Council
Louise Buckle (LB)	Yate Rocks residents' representative
Kirsty Couch (KC)	Autumn Book Management Company
Sarah Sinstead (SS)	Autumn Brook Management Company
Emma Warlock (EW)	The Friends of Ridge Wood
Mike Brown (MB)	Heidelberg Materials UK, Southwest Area Operations Manager
Joe Edwards (JE)	Heidelberg Materials UK, Chipping Sodbury Quarry Unit Manager
Trystan Mabbitt (TM)	Heidelberg Materials UK Consenting & Development Manager
Michelle Beasley (MMB)	Heidelberg Materials UK secretariat

APOLOGIES AND MEMBERS ABSENT:

Rob Sims (RS)	Barnhill residents' representative
Neil Higgs (NH)	SGC Environmental Health Officer (EHO)
Richard Ashton (RA)	SGC Community Spaces Improvements Team Manager
Gareth Fielding (GF)	Wickwar Parish Council
Ben Nutland (BN)	SGC Councillor for Yate North ward
John Davis (JD)	SGC Councillor for Yate Central ward
Fergal Cummins (FC)	Chipping Sodbury Town Council
Adrian Rush (AR)	SGC Councillor for Chipping Sodbury and Cotswold Edge Ward
Julie Reed (JR)	Yate Rocks residents' representative
Karen Hayes (KH)	South Gloucestershire Council (SGC) Public Rights of Way (PROW)
Andy Duncan (AD)	Heidelberg Materials UK Principal Landscape Manager
Samantha Stagg (SS)	James Reed PR

Agenda

- 1. Welcome and introduction – Interim Chair Mike Brown (MB)**
 - **Review of minutes from the last meeting**
 - **Matters arising from the last minutes**
 - **Review of aims and membership of the group**
- 2. Chipping Sodbury Operational Update – Joe Edwards (JE)**
 - **Operations and logistics (incl. blasting)**
 - **Feedback**
 - **Traffic Management**
 - **Community Support**
- 3. Environmental, landscape and biodiversity update – Andy Duncan (AD)**
- 4. Land and Mineral Planning update – Trystan Mabbitt (TM)**
- 5. Community Update – Joe Edwards (JE)**
- 6. AOBs**
- 7. Date for future meetings**

MEETING MINUTES

1. Welcome and Chair introduction – Mike Brown (MB)

- MB introduced himself and welcomed all attendees to the meeting.
- Attendees introduced themselves and set out which organisations/groups they were representing.
- MB explained that he was acting chair until a new chair is appointed, he said at other HMUK sites it's been one of the local county councillors that usually take on the role.
- MB asked if the group was happy with the content of the draft minutes from the previous meeting. All members said they were happy with the content.
- SS wanted to point out that Autumn Brook is a management company and not a resident's association, South Gloucestershire Council did not adopt the open spaces, and so Autumn Brook manage them instead,
- MB went through the actions from the last meeting.
 - ❖ JE to write to the council about the broken carriage way.
JE said he had written to the council but had not received a response, although a patch repair had been made. MB asked TM to tag on to discussion he was having with the council.
 - ❖ JE to email members when he has a date for the trees to be felled.
JE said he had not had a date yet, but said September is likely to be the earliest they can be done.
 - ❖ AH to get in touch with KC reference biodiversity and planting trees.
AH or AD not in attendance, MB said he would get AH to make contact.
 - ❖ FC to pass contact details of careers at Chipping Sodbury school to MB.
MB said he now has a contact and is meeting with 6th forms next week to discuss a higher apprentice for next September.
 - ❖ JE to sort out the tree that's come down on the footpath to The Ridge.
JE said he couldn't find it and JF confirmed it had gone.
 - ❖ AH to explain ecology reference the new planting at Brinsham West.
MB said he would cover this in the main agenda.
 - ❖ TM to check the noise data is correct.
TM said he checked the data, and it is no different from similar quarries where he's been involved in the planning. He said he would put details on noise permission in the minutes and on the website.
 - ❖ LB to send JE details of littering and fly tipping at edge of land.
JE said he's not received anything, and LB confirmed there is no littering at present.
 - ❖ SS to write to members to ask if there is a preferred time, they could attend this meeting.
MB said it had not yet be done because of the election.

- ❖ **FC to find out who at South Gloucester Council to speak to about the traffic lights.**
FC not in attendance.
- ❖ **FC to speak with local police force to see if he can get someone to attend meeting.**
JE said the local PC and PCSO have been asked to attend the next meeting.
- ❖ **KC to give details of the yellow lines to MB to see if Heidelberg Materials can help.**
KS said she had emailed Yate but had not received a reply. MB said we could possibly help out if it was because of cost, but would need permission from SGC Highways.
- ❖ **MMB to add approved minutes from the last meeting to the community web page, and the draft minutes from this meeting.**
Done

2. Chipping Sodbury Quarry Operational Update – Joe Edwards (JR)

- **JE advised the group of production volumes for 2024 YTD which showed the site was ahead of its target.**
- **JE advised that completion of Brinsham East level 2 is expected this year, plus successfully sinking into level 4 in Brinsham East.**
- **JE said works are under way to access level 7 in Hampstead Farm.**
- **JE said some major plant repairs were undertaken in May and June.**
- **JE said all stockpiles had been emptied from Barnhill stocks and its final closure phase was underway, with planned completion in 2025.**
- **JF asked if the gap in the fence was being repaired.**
- **JE confirmed the fences were booked to be repaired w/c 15th July.**
- **JE said he would continue to seek operational efficiencies.**

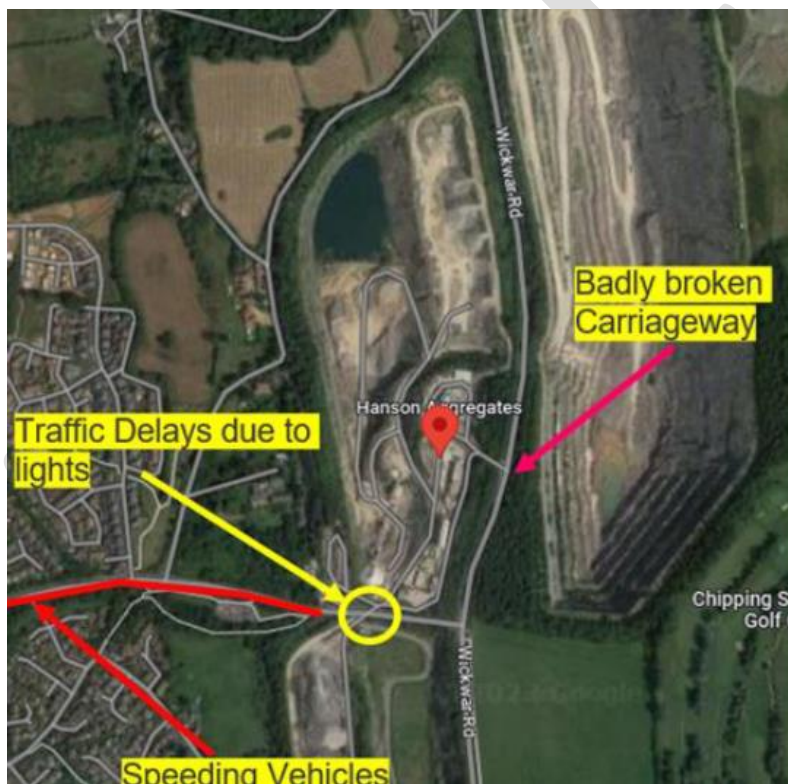
Blasting

- **JE advised there had been 13 blasts this year to date which has provide 536kt of material. (520k at Brinsham East)**
- **JE said the Maximum Instantaneous Charge (MIC) was 221kg. The maximum Air over Pressure (AOP) was 127db and the highest recorded vibration (measured as Peak Particle Velocity) was 4.77mm/s PPV.**
- **JE told the group planning permission states that 95% of the blasts must be below 6mm/s. All blasts have been well within this level on this logarithmic scale.**

Date	Shot No	PPV Recorded	Scaled Distance	Air Over Pressure	MIC	mic ^0.5	Quarry Level	Easting of Shot	Northing of Shot	Elevation	Location of Vibograph
29-01-24	R0124	4.77	32.9	127	205	14.3	BR L3	372671	185221	66.15	Maple Ridge farm
31-01-24	R0224	1.22	52.5	122	195	14.0	BR L3	372588	184959	69.1	Maple Ridge farm
19-02-24	R0324	1.68	39.6	118	176	13.3	BR L3	372666	185166	68.53	Maple Ridge farm
14-03-24	R0424	1.62	44.0	114	220	14.8	BR L3	372575	185040	69.18	Maple Ridge farm
25-03-24	R0524	1.97	39.2	123	190	13.8	BR L3	372632	185150	69.39	Maple Ridge farm
10-04-24	R0624	3.02	42.9	128	221	14.9	BR L3	372570	185056	69	Maple Ridge farm
17-04-24	R0724	2.62	33.1	120	162	12.7	BR L4	372623	185269	52.86	Maple Ridge farm
07-05-24	R0824	1.88	41.4	107	182	13.5	BR L3	372572	185135	69	Maple Ridge farm
07-05-24	R0924	1.88	43.6	107	203	14.2	BR L3	372574	185072	68.59	Maple Ridge farm
22-05-24	R1024	1.8	39.2	116	202	14.2	BR L3	372659	185133	68.27	Maple Ridge farm
13-06-24	R1124	2.8	42.2	133	210	14.5	BR L3	372573	185081	69.1	Maple Ridge farm
01-07-24	R1224	0	84.7	0	80	8.9	HMPL5	372730	184347	19.95	Rockwood House

Traffic management

- JE advised he had emailed the council about the condition of the carriageway but had not yet received a response.



Community

- JE said £1,000 support had been donated to Chipping Sodbury Festival, allowing organisers to extend planned educational events to more local school children.
- JE said local works with Autumn Brook was being planned and he was continuing support for Abbotswood primary school.

HMUK's stand at Chipping Sodbury festival.

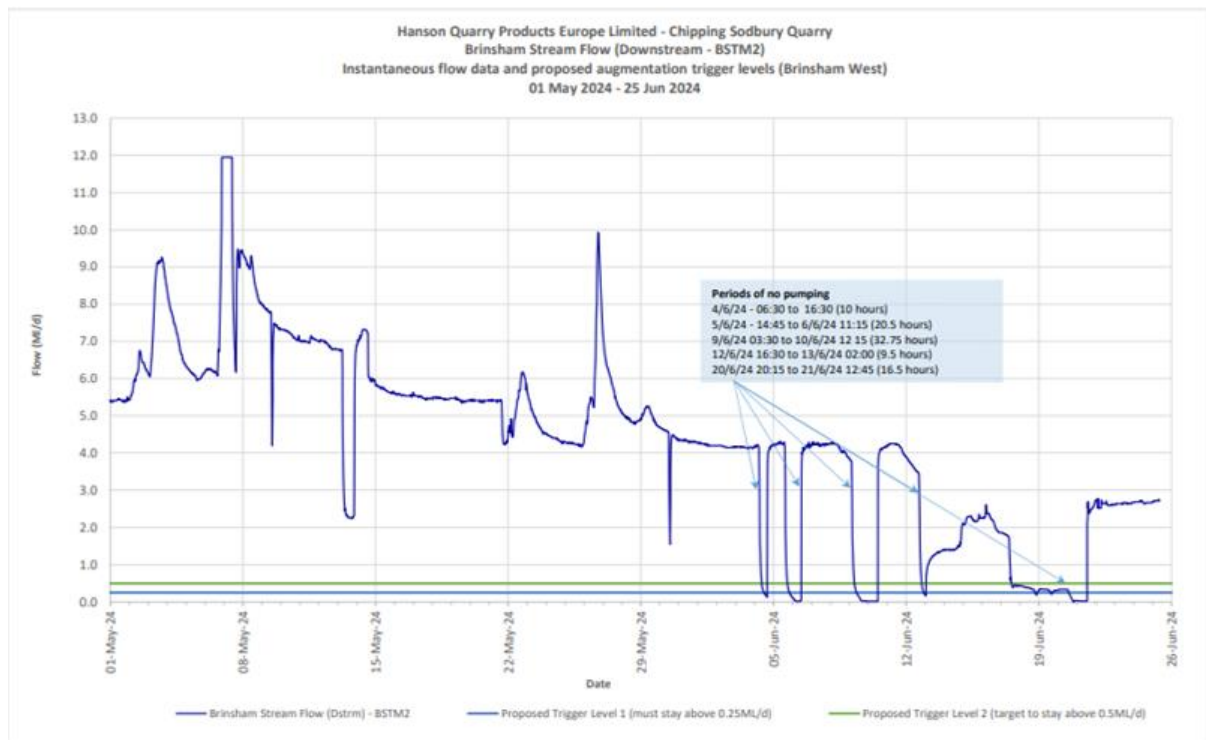


- **JE said a blast email/text notification service for local people was under development, he said it is a free service that includes a weekly update setting out the planned blast times for the week ahead, plus a follow up notification approximately half an hour before each blast takes place.**
- **JE said to register interest, please email chippingsodburyquarry@uk.heidelbergmaterials.com.**
- **KC asked if it was OK to communicate this to residents.**
- **MB replied it was fine to communicate, and it would also be publicised locally.**

Brinsham Stream update

- **JE said Brinsham Stream, up until June has had a consistent supply of water from the quarry. In April 2024 the main pump failed following a thunderstorm, which meant a hire pump was installed to maintain flows and control levels.**
- **JE said as you can see from the graph, there has been some outages. He said on 4th June there was an issue with the generator awaiting a contractor**

to repair, on 5th June there was an issue with the pump which was caused by the generator issues. On 12th June the site had to abandon the quarry floor due to high water levels, meaning the generator had to be moved to higher ground and the pumps had to be reinstalled, plus on 20th June the pump was damaged during the move and flow was flagged as failing. A hired replacement pump was installed on 21st June.



- JE said due to winter flooding and pump failures, the project from last year was delayed.
- JE said the overheating issues should no longer occur due to a £50,000 upgrade of the electrical controls. He said we have since established a new electrical connection into Hampstead to run a single 90KW pump.
- JE said by the end of August we plan to have a second electrical connection established for the second “backup” 90KW pump. He said we are currently restrained by contractor availability, drilling conditions, geotechnical issues and vandals.

Brinsham West development

- MB said regarding ecology, all consultancy is underway for bats, dormice etc. so we can apply for the appropriate licences.
- MB said regarding noise and dust, surveys would be completed.
- LB asked how a dust survey would be done.

- **MB said they use what is called a “dust scan” which can scan 360 degrees to assess which direction dust is coming from.**
- **MB said TM had been working on access via Wickwar Road as a part of the plan.**
- **MB said appropriate fencing will be erected for safety and security.**
- **MB said regarding blasting, we have permitted limits but will work on it with the contractor.**
- **MB said as a part of the scheme power and water will also be included in the plan.**
- **LB asked if the water would go through the stream.**
- **MB replied yes.**
- **LB asked if this would increase the risk of flooding.**
- **MB said we will have permits to abide by from the EA.**
- **LB asked if the pumps are turned off during heaving rain.**
- **JE said he had in the past, but it had no effect on rain flood.**
- **LB asked if climate change was considered within the scheme.**
- **MB said the current plans are 15 years old, everything will be fresh, and we will abide by current regulations and standards. He said as we get into the detail, we will communicate with you.**
- **TM said a part of the discharge of any conditions included in any permission is, it’s not necessarily something the council would consult with the public regarding, yet it’s something we’d be willing to discuss at liaison meetings should that be of assistance.**
- **MB said we will be transparent, even if it’s a case of we agree to disagree.**
- **LB asked what the time scale was.**
- **MB said possibly a year, we will be getting on with it, but delays can be around the ecology, the EA and getting an extraction and discharge licence.**
- **TM said one of the key things we’ll be looking at is the water environment. This will include looking at a possible requirement for pumps and steps we may need to take to regulate flow.**

- MB said flooding is something we may be able to help mitigate.
3. Environmental, landscape and biodiversity update – Joe Edwards (JE)
- JE said the last 18 months have been the wettest period ever.
 - JE said debris clearance from upstream had been instigated following contact from a Maple Lane resident.
 - JE said following a tree survey we are liaising with consultants about hazardous tree management. The aim is to schedule work outside of the bird nesting season, however if critical trees need to be felled during this time the work will be overseen by someone with relevant competence.

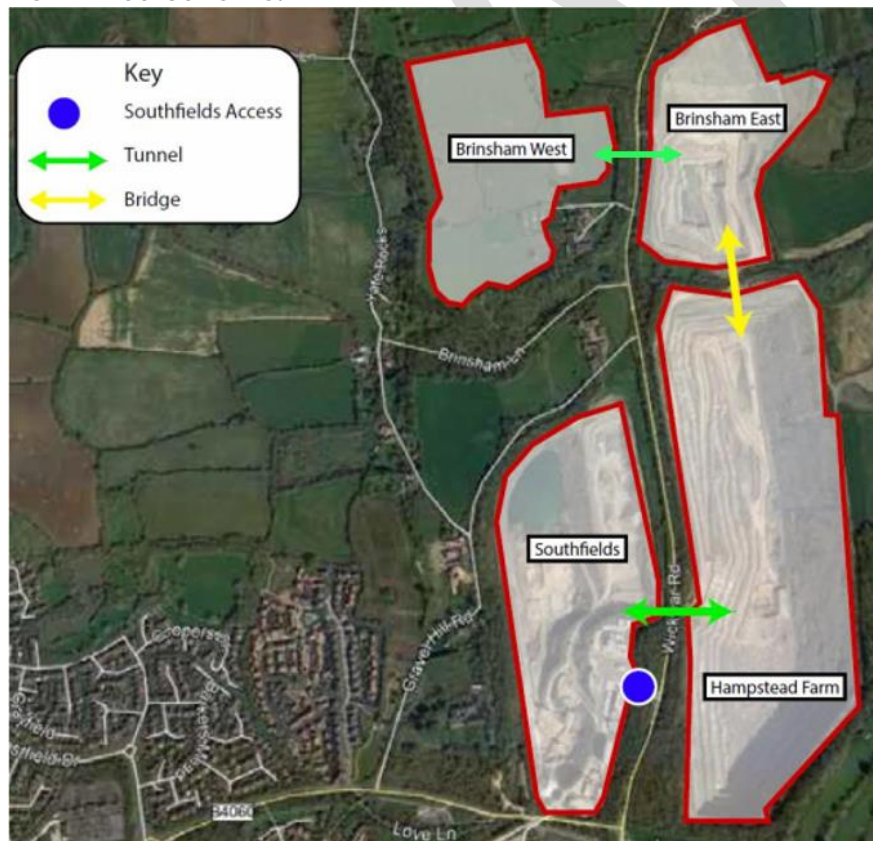


- JE said he had recently seen an increase in wildlife within the quarry.
- JE said the Hydroseeding of the bank by the offices is now complete and starting to germinate. He said the new planting was now in the maintenance phase to control weed competition.
- JE said great crested newt surveys of the ponds associated with the Hampstead tip development are now underway. He said results from two nights of monitoring saw a strong medium population, which is what it was before the development of the tip took place and illustrates that our mitigation through planting and pond creation has been successful.



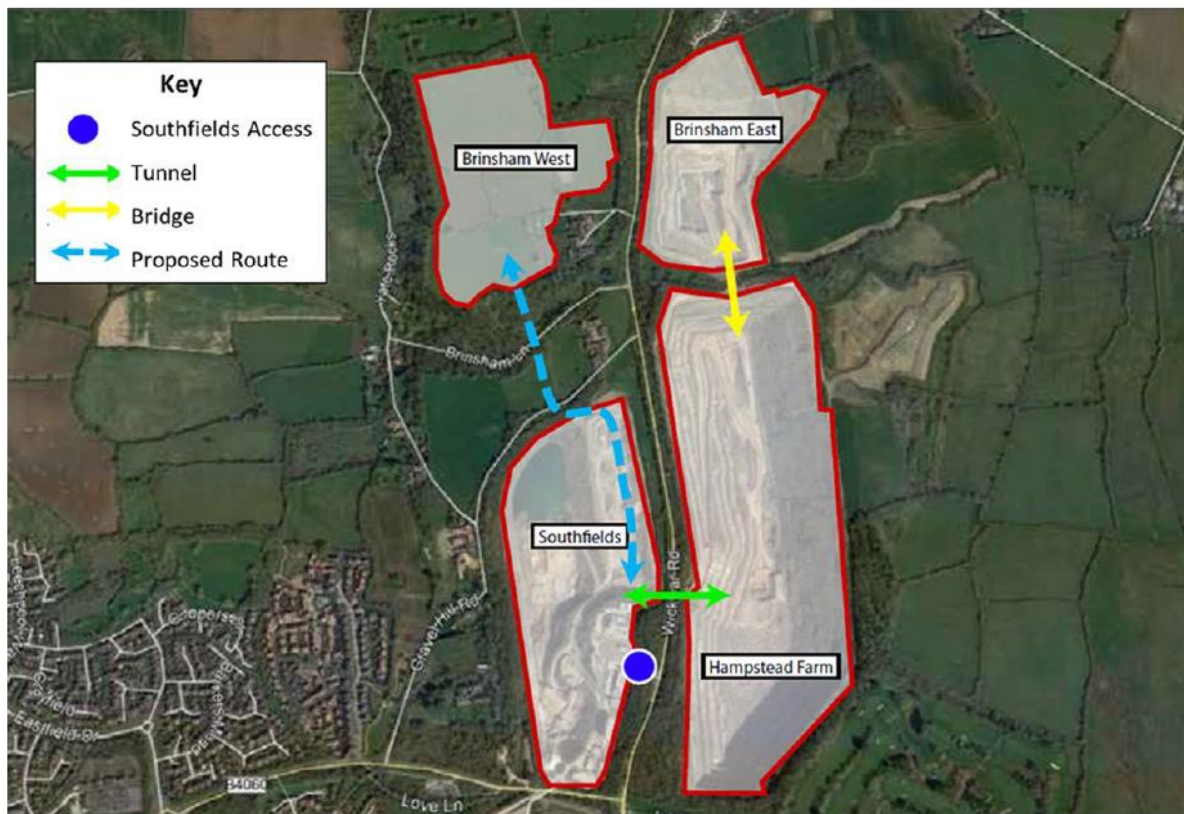
- JE advised that a unique competition, “Quarry Life Award” was being run by Heidelberg Materials. He said it is a scientific and education competition which takes place every three years at national and international levels. Its aim is to raise the awareness of the ecological value of extraction sites and sharing new best practices. He said it’s a fantastic opportunity for school and college students to work at a biodiversity project. More details can be found at www.quarrylifeaward.com/en.
 - MB said the last quarry life award, the habitat and species award went to a team from Bath Spa University who had been assessing habitat quality parameters and sand properties at our Masters quarry in Wareham, Dorset which is a sand lizard breeding site.
 - MB requested that Andy Duncan’s email address be added to the minutes if anyone would like to progress to get feedback on any ideas.
Andy.duncan@heidelbergmaterials.com.
4. Land and Mineral Planning update – Trystan Mabbitt (TM)
- TM said the current permitted scheme was to work in Brinsham east, with some in Hampstead when water permits.

Permitted scheme.



- TM recapped on the planning application for the propose temporary haul road. (map of proposed scheme below). He said the haul road will halve the distance across the quarry, the equivalent of saving 500,000 km+ travelled during the quarry life.

Proposed scheme.



- TM said full carbon comparison indicates that there will be at least a 30% overall reduction in carbon savings compared against the permitted conveyor tunnel and that of the proposed haul road.
- TM said the next area of succession would be what we can do to minimise the visual impact of the landscape, he said with advance planting on either side of the haul road.
- LB asked where the road goes once in the quarry ground.
- TM said within the red dotted line (see photo below) he said it will eventually go through the shooting ground to the historic face.



- JF asked how many traffic movements in a day was predicted for the new haul road.
- TM said it was not currently known but he would get the information by the next meeting of the worst-case scenario. *Update – Based upon existing tonnages that we would seek to replicate (circa 1MT per year) the current movements stand around 200 vehicle movements per day, which also factors in the commitment to reduce weekend working.
- SS asked if it would be used just during the working week.
- TM said mainly, with some weekend work in an emergency.
- TM said we are anticipating resubmitting the application at the end of the month and there will be a formal notification to residents and the press for public review.
- MB asked that the web address for Chipping Sodbury quarry community page be added to the minutes.
www.communities.heidelbergmaterials.co.uk/en/sites/chipping-sodbury-quarry-community-page

5. AOBs

- MB said at the next meeting he had invited Kate Layton-Smith who is the Managing Director of international business at The Ridge. He said she will be doing a presentation to raise awareness of the job opportunities available. www.careers.heidelbergmaterials.co.uk/en
- MB said The Ridge is a UK and global business function.
- A few members of the group said there were not available for the next meeting in October, so a new date of 31st October has been proposed.

Summary of Actions

- **JE to email members when he has a date for the trees to be felled.**
- **TM to speak with council about the broken carriage way when he is in discussion with them about the planning application.**
- **TM to find out how many vehicle movements will be on the proposed haul road as a worst case.**
- **AH to get in touch with KC reference biodiversity and planting trees.**
- **TM to add details of noise permission to the minutes and on the website.**
- **SS to write to members to ask if there is a preferred time, they could attend this meeting.**
- **FC to find out who at South Gloucester Council to speak to about the traffic lights.**
- **KC to give details of the yellow lines to MB to see if Heidelberg Materials can help.**
- **MB to send LB a link to vacancies at The Ridge.**
- **MMB to add approved minutes from the last meeting to the community web page, and the draft minutes from this meeting.**

Proposed dates for next meeting

Thursday 21st November 2024 at 17:00

Thursday 9th January 2025 at 17:00

Thursday 10th April 2025 at 17:00

Thursday 10th July 2025 at 17:00

[ENDS]