

**Batts Combe Quarry  
Community Liaison Group Meeting  
7<sup>th</sup> March 2024  
Meeting Room at Batts Combe Quarry**

**MINUTES**

**ATTENDEES:**

- **Cllr Ben Ferguson (BF) CHAIR**      **Somerset County Council**
- **Cllr Pauline Ham (PH)**              **Somerset County Council**
- **Cllr Mike Taylor (MT)**                **Axbridge Town Council**
- **Nick Hoof (NH)**                        **Resident**
- **Nathan Chard (NC)**                    **Avon & Somerset Police**
- **Ruth Amundson (RA)**                 **Somerset County Council Planning**
- **Sally Devlin (SD)**                     **Careers – Kings of Wessex Academy**
- **Cllr Paul Fineran (PF)**                **Cheddar Parish Council**
- **Simon Parkes (SP)**                    **Heidelberg Materials UK, Batts Combe Quarry**  
Unit Manager
- **Michelle Beasley (MB)**                **Heidelberg Materials UK, Secretariat**
- **Caroline Gould (CG)**                 **Heidelberg Materials UK, Batts Combe Quarry**  
Operative
- **Alex Hemming (AH)**                    **Heidelberg Materials UK, Senior Landscape**  
Architect
- **Ben Ayers (BA)**                        **Heidelberg Materials UK, Land & Mineral**  
Resource Manager

**APOLOGIES AND MEMBERS ABSENT:**

- **Jim Hardcastle (JH)**                    **Mendip Hills AONB**
- **Martin Stoyles (MS)**                 **EHO Office Sedgemoor District Council**
- **James Hynes (JRH)**                  **Heidelberg Materials UK, Land & Mineral Estates**  
Surveyor

## **AGENDA FOR BATTS COMBE QUARRY COMMUNITY LIAISON MEETING**

- 1. Welcome and Chair introductions – Chair Cllr Ben Ferguson (BF)**
  - **Membership Update**
  - **Review of minutes and actions from last meeting**
- 2. Batts Combe Site update – Simon Parkes (SP)**
  - **Quarry development and site update**
  - **Feedback & Complaints**
  - **Speed monitoring / Transport**
  - **Community giving**
  - **Haulier induction Process (CG)**
- 3. Landscape and biodiversity update – Alex Hemmings (AH)**
- 4. Land and Mineral Planning update – Ben Ayres (BA)**
- 5. Environmental Health update – no attendance**
- 6. Council update – Pauline Ham (PH) Ruth Amundson (RA) Mike Taylor (MT) Paul Fineran (PF)**
- 7. Local Resident update – Nick Hoof (NH)**
- 8. Police and School update – Nathan Chard (NC) Sally Devlin (SD)**
- 9. AOBs**

## **MEETING MINUTES**

### **1. Welcome and Chair introduction**

- **BF welcomed attendees to the meeting.**
- **Membership update – BF introduced himself and asked everyone if they had reviewed the minutes from the previous meeting, and if they had, were they happy for the draft to be finalised. All attendees said they were happy with the minutes from the previous meeting.**

### **2. Batts Combe (Heidelberg UK) site update**

#### **Quarry development and site update**

- **SP said regarding the site update it was unchanged since the last meeting. He said we are concentrating on working in the Southeast corner and the removal of the brown top rock is going well, with a couple more blasts planned in the area. This work will widen the gap and will make the northern benches more visible.**
- **SP said tonnages had increased recently as we've seen an upturn in sales volumes.**
- **SP said we have recently had a planning monitoring visit which went ok. We were found to be abiding by our planning conditions, the report is still to be issued as we had a few questions to answer, which was completed today.**
- **BA said one of our planning conditions is that we can't produce any more than 6 million tons in a 5-year period.**
- **SP showed some figures of production to the group to highlight the fact the site is well within its planning condition limits.**
- **NH asked if this visit covers all on-site issues or off-site issues as well.**
- **SP said it covers all our planning conditions from dust, tonnages and opening times.**

#### **Feedback and complaints**

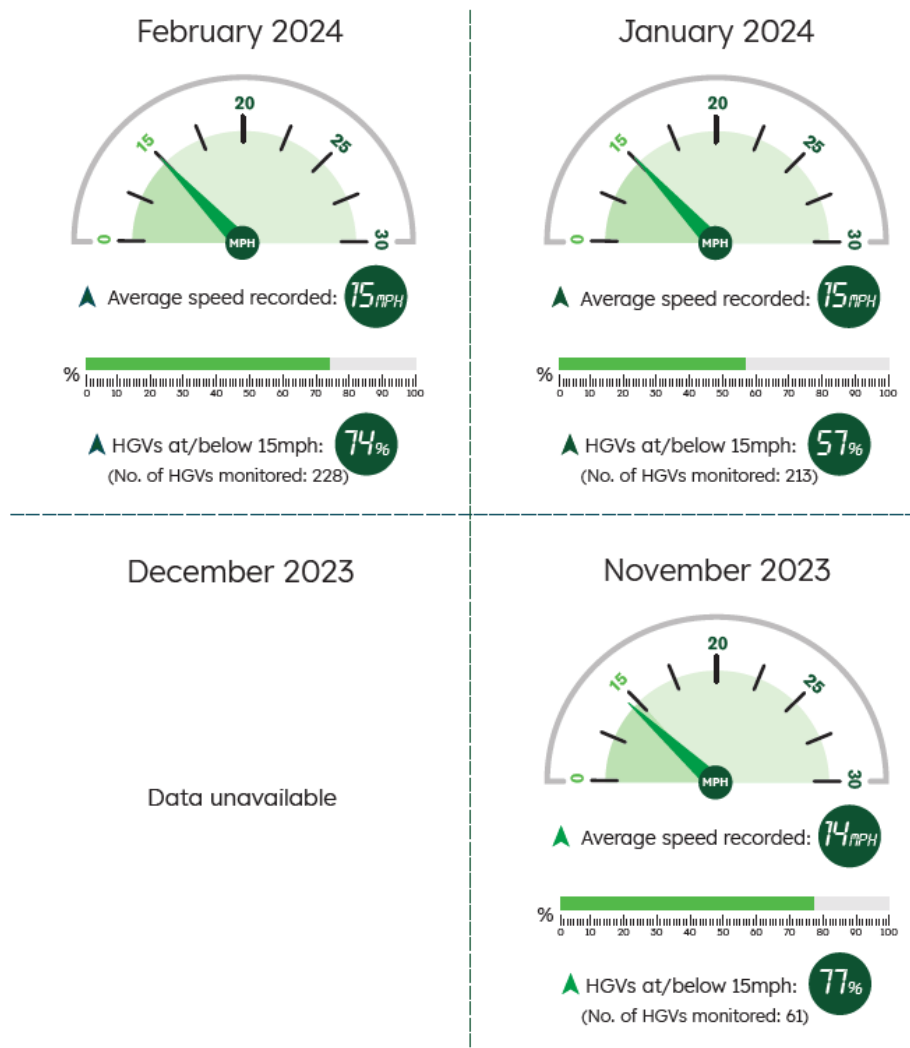
- **SP said 18 complaints had been received since the last meeting, most of them are for driver behaviour and a couple for blasting vibration. He said the team has arranged to do some localised vibration monitoring at a residential property in Warrens Hill.**
- **SP said with the uplift in work, we've seen more external haulage than usual which has created some issues with drivers. Several, who have**

contravened quarry protocols, have already been banned and we are working closely with a customer who has a large volume of this work, who has also been pro-active in trying to alleviate the problems.

### Speed monitoring / Transport

- SP show the speed data graphs to the group and apologised for lack of speed monitoring in December. He advised it was due to being short staffed. He said January and February speed monitoring has increased considerably with more HGV's being monitored.

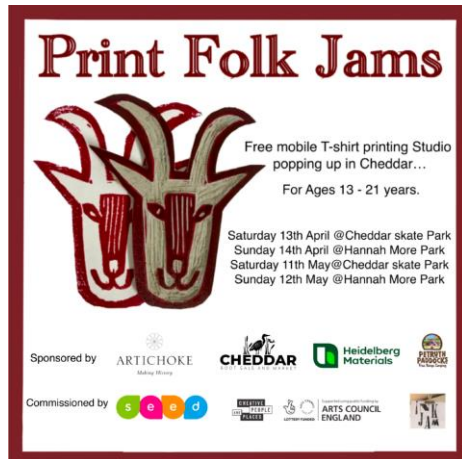
### Batts Combe HGV speed monitoring



### Community giving

- SP said the site had received lots of requests for funding and materials this year so far, which we are still working though.

- **SP said we've agreed to fund £100 for Cheddar Arts Fringe Festival and £250.00 for Wedmore Festival, both to go towards the costs of putting on the events.**
- **SP said Cheddar Ink jam and Cheddar flower show had also made requests for financial support, both of which had been approved.**



### **Haulier induction process**

- **CG explained the haulier induction process, which is called MP Connect. She said MP Connect is an on-line platform that collates, stores, and displays driver competencies via the MPQC (Mineral Products Qualifications Council).**
- **CG said this will in time replace the amount of safety cards that the drivers and contractors are required to carry such as EPIC cards, TARMAC OneCard, and old style MPQC cards.**
- **CG said currently, external customers are not required to carry an MP Connect card for Heidelberg Materials UK and are under no obligation to show them upon entry. However, all Heidelberg Materials UK franchisees are, and do so.**
- **CG said currently, all different quarries have different standards and different cards. MP Connect will eventually replace all cards, so there will only be 1 card. Now, only franchisees must have the MP Connect card, but when MP Connect becomes an industry standard, everyone will have to have it, including collect customers.**
- **CG said drivers' cards store information like the individuals record of training, and the inductions they have completed.**
- **CG said at Batts Combe Quarry, we aim to provide inductions to hauliers before they begin their journey to the quarry. These are provided by our central office, sales reps, or the weighbridge. The induction provides the driver with the roads they can use to access the quarry, the speed at**

which they must abide by, and any hazards to look out for, such as road pinch points, walkers etc.

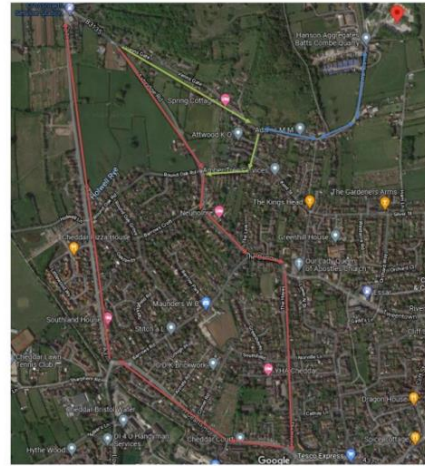
- **CG said we have on-line groups where we can remotely send inductions to be completed by hauliers before they enter the site. She said we also have a live spreadsheet that we can view to ensure hauliers are inducted., and we have facilities in the weighbridge to help those that are not tech savvy, to complete their induction.**
- **NH said, you mentioned that MP Connect can't be insisted upon, can't Heidelberg Materials UK insist on all hauliers use it.**
- **SP said we are not at the stage yet where we can enforce with our collect customers. We have approached all of them and trying to get them all on board, but currently it's not mandatory.**
- **NH asked what is stopping you from insisting all hauliers use MP Connect. Is it just economic reasons?**
- **SP said its economic and fairness, we've introduced it and ascertained that there will be a period of grace for people to get on board with it, and ensuring we are picking up all the customers. For example, if a new customer has only ever been to a Tarmac site, they will not have MP Connect, and it is not industry wide at the moment.**
- **NH said so this is more of a long-term aim.**
- **CG said yes, MP Connect will become a whole industry wide standard, so eventually all quarries will have to use it, a lot of our external customers already have it as they know it's going to be coming as standard, so they are getting ahead.**
- **CG showed a slide of the "Batts Combe Haulier Rules" that is given to all hauliers.**



### Batts Combe Haulier Rules

#### Weighbridge 01934 742733 – opt 1

- Please can you ensure you've completed a full site induction before visiting site, this can be obtained by calling the weighbridge.
- Due to planning rules, the quarry is not permitted to open until 06:00am Monday to Friday, and 7am on Saturday. No vehicle can exit the quarry until 06:30am Monday to Friday.
- No vehicle should try to access the site via Venns Gate until 05:55am Monday to Friday and 06:55am on Saturday.
- Please plan your route to arrive at the quarry at the above permitted times, do not attempt to queue by the magic roundabout (BP garage).
- There is a mandatory 15MPH speed limit for all HGV's on all three roads. (Venns Gate, Hannay Road and Warners Hill) There is regular speed monitoring carried out at these locations. Drivers caught going over 15MPH could face a ban from site.
- All vehicles MUST be sheeted before leaving the quarry.
- Please do not sheet or unsheet outside of the quarry.
- Please do not react to confrontation or problems caused by members of the public. Report immediately to the weighbridge.
- Please observe correct vehicle routes and weight restrictions on Venns Gate and Hannay Road (Map overleaf)
- If there is a restriction preventing entry or exit on any road, please call the weighbridge immediately BEFORE attempting to go around, specifically through the weight limit on Hannay Road.
- All damage or incidents should be reported IMMEDIATELY to the weighbridge, DO NOT LEAVE THE SCENE!
- Tractors and trailers are not excluded from these rules.
- CB radios are advisable as they allow communication between vehicles entering and exiting the quarry where vehicles cannot pass, to reduce problems.



ONE WAY 2 WAY EMERGENCY ROUTE IF VENNS GATE BLOCKED

- CG showed an example of the Batts Combe Site Induction, she said once this is completed by the driver, it is linked to their MP Connect card, so when they scan their MP Connect card, we can see they have completed the induction.**

### Batts Combe Site Induction

[Sign in to Google](#) to save your progress. [Learn more](#)

\* Indicates required question

Email \*

test@test.com

First Name and Last Name (as it states on your MP Connect card) \*

Test

Haulier email address (optional)

Test

What Haulage Company do you work for? \*

HM

What type of vehicle do you normally drive? \*

Artic Tipper Lorry

Rigid Tipper Lorry

Walking Floor

Up to 7.5t

Tractor & Trailer

Your MPQC Number. \*

It is a mandatory requirement to supply your MPQC Number as part of this site induction. This site induction will be void if you do not provide your MPQC Number. If you are a new driver and have not as yet completed your MPQC course, enter 'Pending' with details on course location, date of attendance and booking reference. If you are collecting Ex Works, please input Ex Works.

Test

---

National Insurance Number \*

Test

---

Privacy Policy - GDPR

The Hanson full Privacy Notice is available at: [Hanson privacy policy](#) | [Hanson UK](#)

If you are unsure or have any questions following this induction, please ask your haulier. If you still require clarification, please ask your haulier to contact the Distribution Resource Manager.

Next Clear form

Never submit passwords through Google Forms.

This content is neither created nor endorsed by Google. [Report Abuse](#) - [Terms of Service](#) - [Privacy Policy](#)

Google Forms

- CG said in the induction, there are 7 multiple choice questions, and the driver must get all 7 correct. If they get any incorrect, they must repeat the test over again until they get all 7 correct.**
- SP said we insist on a 100% pass rate.**

- **NH asked if the induction information is held even if they don't have MP Connect.**
- **CG said yes, if they are external customers they go down as ex-works but still have an induction.**

### **3. Land and Mineral Planning update**

- **BA advised Batts Combe had a monitoring visit last week and were waiting for a report to come out. He said it involves a site visit which lasts 1-2 hours and they run through the conditions relating to the site.**
- **BA said Batts Combe is also due for a periodic ROMP review (Review of mineral planning) which we are still waiting to be served notice on. He said once notice is served, we will look at all planning conditions to ensure they are up to date and update if required.**
- **RA said the notices have been drafted and just waiting to be signed off, so I'm expecting they'll be sent in the next couple of weeks.**
- **NH asked if this was the ROMP notice that will be served in the next couple of weeks.**
- **RA said yes, we have to serve notice and set out the permissions.**
- **BA went on to explain Heidelberg Materials then have 12-18mths, depending on the time frame of the notice, to submit what it believes are reasonable or realistic updated conditions and assessing the current best practices and conditions like blasting. It will then be submitted with any changes to the council. The council then have a period to determine. The council go out to statutory consultation, get comments back from local communities, statutory and non-statutory bodies on the review process, to enable them to decide.**
- **RA said officially the council have 18 weeks for EIA development.**
- **NH asked what's the best way for the public to be aware when the ROMP notice is issued so the public can comment.**
- **RA said the council would not publicise the serving of the notice, other than through this liaison group. This is because there would be nothing to comment on at this stage. It will be publicised once the application is in. It would then be publicised widely, press notices, letters to residents, usually to properties of those within 500 metres of the quarry.**
- **PH said what about social media, it's a good way to communicate with residents.**



- RA said she didn't think they did as a rule, but it's something she could raise.
- BA said once the notices come in, Heidelberg Materials will have a time scale to prepare submissions, and as part of that we'll communicate with the community before we submit the application to explain the proposal, as it can get confusing when a ROMP review application is submitted, as people think it's a new extension, when in fact it's just updating an existing footprint of the site which is in place until the year 2042. For instance, one of the things we discussed was to update the restoration plan.
- RA asked if feedback from the communication events would be included in the application.
- BA said yes, it could be summarised in the submission, we have done that before.
- AH said in the past for previous applications, we have also had feedback forms if somebody wanted to put something in anonymously. There will also be an opportunity to email queries and questions for those that feel uncomfortable doing it face to face.
- BA said it is good practice to have pre-consultation with the community.
- AH said engagement is important to us, it helps get our message across and dispel any myths, concerns, or any incorrect notions about what's going on. It works very well for both parties to publicly engage.

#### 4. Landscape & Biodiversity update

- AH said at the last meeting she mentioned Heidelberg Materials were going to get some hydroseeding done on the back ramps. That has been completed today. Previously the ramps had greened up nicely, but unfortunately due to geotechnical issues and safety issues, we had to upgrade all the ramps that ran up the back face of the quarry, which has made them visible again. In the Hydroseeding mix there is grass seed, fertiliser, pulp, and a green dye which is so they can see where they have sprayed.
- AH said a thermal drone survey had been carried out to assess the goat and sheep populations. Previously the count has been done by a group of people walking the land owned by Heidelberg Materials, but the sheep and goats like to hide. She said the most she had ever counted was about a dozen, but the thermal drone picked up more than she had ever counted.

- **AH said around 50 goats and 30 sheep were counted, which is much more than thought, and it's highlighted a real problem as they are decimating the woodland. All our natural woodland habitats are being browsed out. They are eating all the bark, literally anything that grows is being eaten. AH went on to say that she personally believes it's having a negative impact on the dormice population. The dormice numbers are plummeting, and believed that is because there is no scrub or tangle for them to live in.**
- **AH said they also eat all the restoration plants that's been planted, and the sheep are causing ongoing problems for our tenant farmers. The sheep are generally in the fields and the goats in the woodland and the quarry.**
- **AH said she is in the process of engaging with a consultant stalker to reduce the numbers. Heidelberg Materials are working with the National Trust and Longleat, communicating with them. She said they have their own population that live on Cheddar Gorge, and they are doing a fantastic job. Here we very much have different aims. The sheep and goats are causing issues with dormice, restoration and quarry health and safety. We are looking to reduce the sheep to zero and the goats to a very small population and monitor the impact they have going forward.**
- **PH asked if the sheep and goats in the quarry are separate to the ones in the gorge.**
- **AH said she thought they probably were, she said before progressing with anything, a catch-up meeting with the National Trust and Longleat would be had, as they also had a thermal drone survey done. The sheep and goats do move across borders, but the National Trust have done extensive fencing on their side to keep their population in or our population out. She went on to say Heidelberg Materials would continue to be a member of that group and keep the lines of communication open.**
- **AH said Heidelberg Materials had employed gangs of tree fellers to work on the old track to Tower Testing and the footpath on the western side of the quarry. He said some dormouse work and coppicing had been done. The aim is to rejuvenate the scrub. dormice like a real variety and tangle of species. People tend to think dormice like hazel, which they do, but hazel only produces nuts at a certain time of year, and the dormice need to feed the rest of the year. She added that dormice like hawthorn, blackthorn, flowers, bugs, but what they really like is a tangle mess of scrub. The work that's been done looks a mess, which was on purpose to keep the goats off.**
- **AH showed the group the information boards that are being set up at The Perch. She said they focus on woodland habitat, and the management that will be going on there. One for the footpath that**

comes out on to the open area grasslands, explaining why scrub clearance is done, and a board for the viewpoint. Which looks over to the reservoir, explaining the habitat connectivity and the importance of ecological networks. She added that she had been working with Somerset Wildlife Trust on the wording of the boards.

5. **Environmental Health update**

- No attendance from Environment Agency.
- SP gave the group some blasting information. He said we've had one complaint for vibration which we have offered some extra monitoring at the property.
- SP said we have not had an EA visit since the last meeting.

6. **Council update**

- MT said there was nothing from Axbridge TC but just wondered how the weather and the amount of rain we've had recently has affected the operations of the quarry and transport.
- SP said flooding hasn't affected Batts Combe quarry at all, but other quarries within Heidelberg Materials have been affected.
- PF said Cheddar PC had received one complaint and thanked SP for dealing with it promptly.
- PH said there was nothing from Somerset Council.

7. **Local Resident update**

- NH outlined that there were numerous requests from the residents for information, plus points and observations. He said that this reflects the fact the quarry has been very busy with lots of new hauliers. He said one resident has taken the trouble to sit there all day and count the truck movements past their house. There were 618 on 14<sup>th</sup> February, with 309 in and 309 out recorded. 27 episodes of reversing outside their house, due to presumably, lack of communication, no CB etc. Trucks queuing from here down the hill to the bend. Four un-sheeted trucks going out, and two concrete bollards hit by reversing trucks. He added that the 309 trucks number coming and going has surprised everyone.
- SP said that the numbers quoted represented a typical day for the volumes in January, which has dipped slightly in February.
- BH said it reflects the increase in tonnages that have been shown earlier, due to the site winning a contract to supply a local development. He added that the team understood concerns re the volume increase but

**stressed that the quarry continues to operate within the limit of the planning restraints.**

- **NH asked what the typical number of truck movements this time last year, would it have been half that.**
- **SP said it would have been an 80% increase in January, slowing down to 50% increase in February.**
- **NH thanked NC for his work outside the garage early in the morning. He said he goes by occasionally and still see them queuing five to ten at a time. It's not unusual to see five to ten trucks going down Venns Gate as early as 05:52am. He asked NC if he could continue the good work he has started.**
- **NH said going back to the contract that's been won, and this is a question to both councillors and quarry, the residents have not had any information about it, is that something that could be improved next time if there is going to be a double amount of truck movements.**
- **SP said it is difficult to pass on commercially sensitive information, but we will have a discussion at our monthly community meeting.**
- **PH said she was aware of the contract but didn't realise it was going to be that immediate.**
- **NH said it would be relevant for some communication, be it on social media, local press, or letters to residents.**
- **NH asked if we could go back to the speed data. He said the January data showed that nearly half of the trucks monitored were exceeding the quarry set speed limit of 15mph. Which has been addressed to some extent by looking at the February figures, which show a quarter of the trucks were exceeding the quarry set 15mph speed limit.**
- **SP said yes, some were caught at 16 or 17 mph, there will be some leeway. It is improving and we are still working with hauliers. If you look at the data, they are not breaking the speed limit of 20mph. Any haulier caught over 20mph get an immediate ban from the quarry.**
- **CG said we monitor in Venns Gate from a resident's driveway, and there have only been 2 caught at 21 since January which were both banned.**
- **NH said it would be interesting to know where the worst places are, as Venns Gate narrows there, so doesn't lend itself to higher speeds.**
- **CG said the worst places she's found when monitoring is Warrens Hill, where it opens up. She said she had noticed they are getting better as we are speed monitoring more with different staff out and NC so they are more aware of us being there.**

- **NH said he would like it recorded that 1 in 2 in January and 1 in 4 in February were over the 15mph. If you are walking and a truck goes by at 16, 17, 18mph, it is a scary event.**
- **NH said the next one is probably one for the councillors. One resident has mentioned the state of the road surface is deteriorating quite significantly. Potholes that have been previously filled are starting to disintegrate.**
- **PH said to go on to the Somerset Council website, as she was uncertain which part of the highway was being referred to. Residents can report a pothole directly, and they come out and repair them very promptly.**
- **NH said its on Warrens Hill, and I would like to think there should be something between the council and the quarry, because it's a very compact area with a huge number of truck movements.**
- **SP said Highways have been out today repairing holes, our issue is there is no communication. We have been in touch to ask if they can give notice of a road closure, but they said they couldn't with emergency patching as they use contractors.**
- **PH said she could get in touch with Highways and ask if there could be some notice.**
- **SP said one of the issues we have, is because Highways use contractors. The contractors close the road, like Venns Gate for instance, and tell truck drivers to go around using the weight restriction.**
- **SP said when a truck driver is told by a person wearing "hi-viz highways" clothing to break a weight restriction, they assume this is ok, when in fact the contractor is not aware of the issues they are causing.**
- **NH said there is clearly a circuit being used by hauliers, Venns Gate, Warrens Hill, Hannay Road and Axbridge Road, I think that should probably qualify for some greater monitoring than just another road.**
- **PH said to NH you could certainly discuss it with that department, but I would say all roads are worse than normal because of the amount of rainwater we have had recently.**
- **NH said one of the residents was particularly vocal about the bend where Hannay Road, Venns Gate and Warrens Hill meet. The trucks swing around the corner and it seems to be where speed picks up in that final section. The resident has several "caught on camera" incidents, so could speed monitoring be picked up in that area.**
- **SP said he would organise that.**

- **NH said one of the residents asked if the road sweeping was still happening in the village at its usual intervals.**
- **SP so no, it's increased. We have nearly doubled the amount of road sweeping since taking on the new contract, but I will find out how much of their time is split between the quarry and the village.**
- **NH said it's good to hear proportionately the sweeping has increased.**

## **8. Police and school update**

### **Kings of Wessex update**

- **SD said to SP a couple of months ago you were kind enough to arrange for one of our 6<sup>th</sup> formers to come on a site visit, purely because he was interested in what was going on here. She said I met with that student this week, and he told me he is going to be applying for the apprenticeship scheme.**
- **SP confirmed he had interviewed two students this week from Kings of Wessex who were both successful and have both been given dates to attend our Chipping Sodbury offices where they will be taking part in the selection process. He said they are both so good, I have been asked to speak to the other managers in my area who are also in the running for new higher apprentices, because we think we should be taking them both on. I only have place for one here.**
- **SD said that is excellent news and that all started from the site visit.**
- **SD said she wanted to thank SP in advance for providing work experience for two year 10 students who are excited to be joining. The school also has year 12 students that will be looking for placements as well, so it's likely they will also be in touch.**
- **SD said she also wanted to thank SP in advance for attending the Kings of Wessex employability skills day on 27<sup>th</sup> March. She said you will be spending a whole day with year 10 students getting them ready for their work experience. Obviously, you can talk about the quarry, and what you do, but you'll be setting them all a task and then giving them lots of feedback on how good they will be and inspiring them for their future careers.**
- **SD said she also had SP signed up for the next careers fair on 16th October and NC had also agreed to attend.**
- **AH said she would be happy to take the year 10 students that are coming for work experience, for a walk in the countryside to show them the role she does.**

- SD said she was going to get some pull up banners with careers information on them, and asked if it would be possible to request a donation from Heidelberg Materials.
- SP said that was ok, and it should be requested through the Batts Combe Community page. Web address below.  
[www.communities.heidelbergmaterials.co.uk/en/sites/batts-combe-quarry/supporting-the-community](http://www.communities.heidelbergmaterials.co.uk/en/sites/batts-combe-quarry/supporting-the-community)
- SP said our relationship with the school is fantastic and the fact we have two apprentices apply this year, and both will be offered placements show the relationship and engagement around the careers events is the key to our future.

#### **Police update**

- NC said he will continue to do early shifts to have a presence at the garage and will move trucks on if they are queueing.
- NC said the speed monitoring he had done found all the lorries captured were doing 15mph or under, it was only cars that he found to be doing over 20. He said he would continue to carry out random speed monitoring in the area.
- SP thanked NC for his work and that it is appreciated. He said the more we are seen monitoring, the more the hauliers are aware of the speed they are doing.
- PH asked NC what he found when he monitored the slip road that comes off the bypass at Axbridge town end. (mentioned at previous meetings, as nobody stops at the stop signs)
- NC said when he was there, everybody stopped.

#### **9. AOBs**

- RA said a few meetings ago there was a discussion about some houses that were being built next door in the old quarry known as Tower Testing. She said she had done some research afterwards and it was interesting. The old quarry had two industrial use buildings with offices, and a few years ago the government introduced “permitted development rights” for conversion of offices to residential. There was an initial application for conversion of the office to establish residential use, and then later came the grand designs. She said the county council were not consulted due to it being a simplified procedure, it’s a notification with a limited time to deal with the application and a limited number of issues that can be raised as an objection. Later, when the planning for more houses arrived that weren’t conversions, the county council were notified, and objected, but the district said there were already houses there that had to be taken account of, so three new ones wouldn’t make that much difference and was approved.

- **RA said Somerset council is now reinforcing the need to consult the minerals and waste team of any future planning applications that are near a quarry.**
- **RA said there is another case where a barn conversion application has been received, which is near a quarry, again a simplified procedure with limited issues we can object on. She said there is going to be a consultation meeting for development rights with the government and we are going to raise that with them, as currently we are being bypassed. She said although it is rare that it happens, we feel it's important that we are consulted.**
- **PF said one of the problems the district council have had with planning, is that Somerset Council don't seem to respond to some of the consultations properly, most responses that have come back from Somerset over the last couple of years, just have a rubber stamp on them, and seems to be no thought given to the application itself.**
- **RA said in this instance its more to do with the process which allows permitted development rights and the notification procedure.**
- **NH asked for clarification on how long the "new" contract that was being supplied, would last.**
- **BA said he didn't have details of the contract, but they would need different materials at different stages. At the start more aggregates to complete the base roads, and then concrete etc.**
- **NH said so from what you know at this stage, you think it would be short to medium term of supply.**
- **SP confirmed the currently supply would be short to medium term, but Heidelberg Materials will always tendering to supply future jobs.**
- **NH asked for an update on an altercation between a haulier and a resident which happened recently.**
- **SP said the driver had been given lifetime ban.**
- **NH thanked SP for dealing with it.**



### **Summary of Actions**

- **MB to upload approved minutes from December's meeting to the Batts Combe web page.**
- **RA to inquire about using social media to advise of planning notices in the future.**
- **SP to discuss at the next in-house community meeting the possibility of notifying residents when there will be an increase in traffic.**
- **PH to get in touch with Highways to see if they can organise giving notice of road closures for emergency patching of potholes.**
- **SP to organise speed monitoring in Hannay Road, just after the hauliers come around the corner from Warren's Hill, where speeds seem to increase.**
- **SP to check how much of the road sweepers time is spent between the quarry and the village.**

### **Proposed dates for next 4 meetings**

**Thursday 20<sup>th</sup> June 2024**

**Thursday 12<sup>th</sup> September 2024**

**Thursday 12<sup>th</sup> December 2024**

**Thursday 13<sup>th</sup> March 2025**

**[ENDS]**